



Planar WallDirector Video Controller

Scalable Video Wall Control

- ▶ *Compact & powerful rack-mount processor*
- ▶ *Captures sources & provides signal extension*
- ▶ *Software for configuration, control & monitoring*
- ▶ *Scales modularly to support larger video walls*



Planar[®] WallDirector[™] Video Controller (VC) is a family of compact and scalable video processors designed to drive select Planar video walls using the web-based Planar[®] WallDirector[™] Software management application. The 1U rack mount Planar WallDirector VC is available in six models for organization's unique applications. Each device captures multiple 4K inputs and drives the video wall at native resolution while providing signal extension over CAT or fiber connections.

Advanced Processing

Planar[®] Big Picture Plus[™] Video Wall Processing enables users to simultaneously view ultra-high resolution content from several independent sources, scaling content across the entire video wall or any section. It also facilitates Picture-in-Picture.





Scalable by Design

Cascade up to 18 Controllers together to support larger video walls and higher resolutions. Planar WallDirector Software manages Planar WallDirector VC groups as if they are one system rather than multiple separate units.



Easy Management

The user-friendly Planar WallDirector Software features one-button presets for set-up and configuration, recalling windowing layouts, dragging and dropping content sources on the video wall canvas and easy manipulation of window size and position. One can even overlap content sources.



Monitor Health

Planar WallDirector Software captures video wall components' health status in real time, in a centralized, convenient location, for easy maintenance. Configurable alerts also help keep you informed. The software, in most cases, can detect the hardware components that are part of the video wall, making setup quick.



Permissions

Set user permission levels in the software to ensure only the people you choose have access to setup and others more-critical administration settings. Similarly, set non-admin permissions that allow others to monitor the health of individual components.



Source Synchronization

Planar® WallSync™ uses Smart Genlock to automatically ensure perfectly synchronized video playback without manual configuration.



Made for America

Organizations that prefer to use products that have been manufactured in the United States or countries designated in the U.S. Trade Agreements Act (TAA) need look no further. Planar WallDirector Video Controllers are TAA Compliant.

Compatible Video Walls

Planar WallDirector Video Controller models can be used with best-in-class Planar LED and LCD video walls, removing electronics from the wall to a separate off-board location, reducing noise and heat from the display wall.

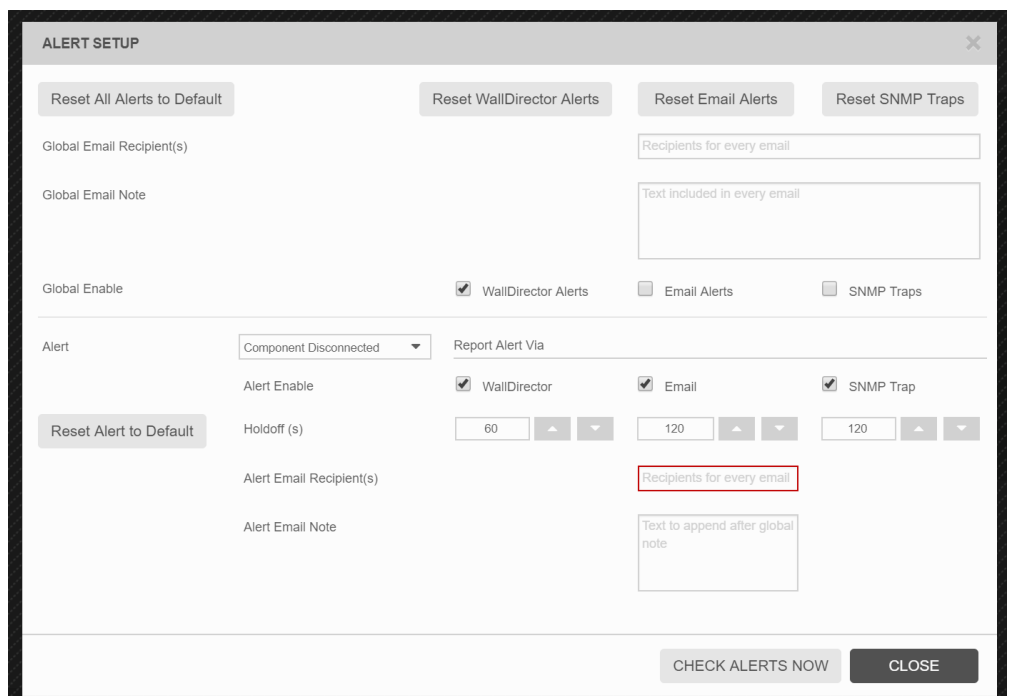
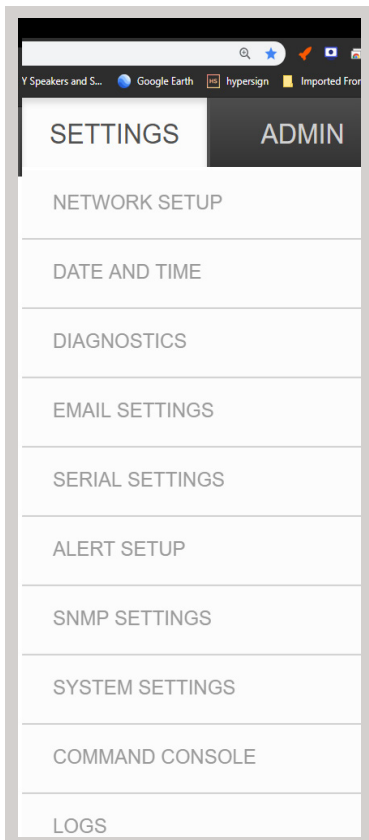
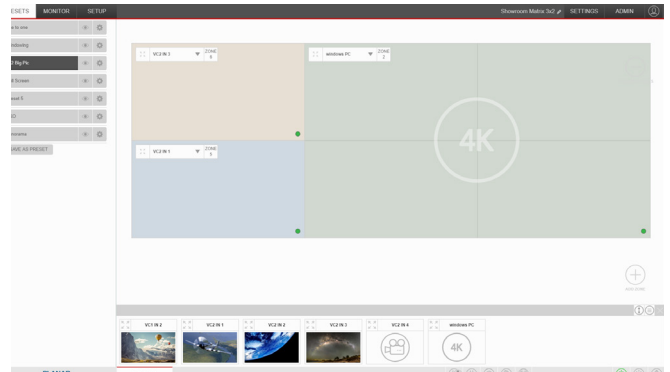
APPLICABLE PRODUCT LINES

- Clarity® Matrix® G3 LCD Video Wall System
- Planar® DirectLight® Ultra Series
- Planar® DirectLight® Pro Series
- Planar® TVF Series
- Planar® Luxe MicroLED
- Planar® Luxe
- Planar® UC Complete™
- Planar® DirectLight® X Series



Planar WallDirector Software

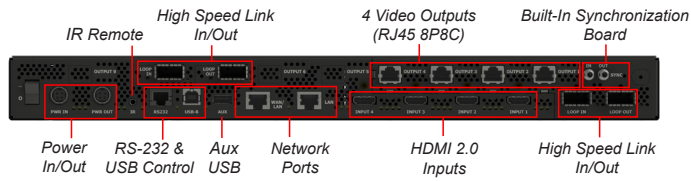
- Set-up & configure a video wall
- Monitor the health & status of all video wall components from a convenient, centralized location
- Drag & drop video wall canvas, for window positioning & sizing
- Send customized email alerts to select people when specific fault conditions arise
- Store & recall windowing layouts via simple, one-button presets
- Permission levels to limit administrator access
- Proactively troubleshoot power supplies and video controllers



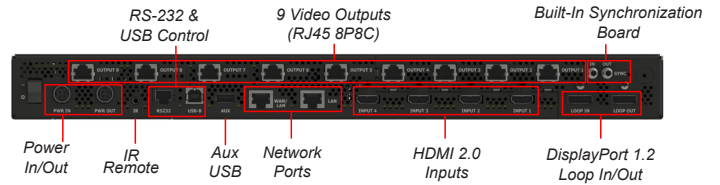
Compatibility

Planar WallDirector VC Model	Compatible Products	Required Fiber-to-CAT Converter
VC4-HSL	Clarity Matrix G3 LCD Video Wall System Planar DirectLight X Series	N/A
VC4H-BP+	Planar DirectLight Ultra Series Planar Luxe MicroLED Clarity Matrix G3 LCD Video Wall System	N/A
VC9H-BP+	Planar DirectLight Ultra Series Planar Luxe MicroLED Clarity Matrix G3 LCD Video Wall System	N/A
VC4-L	Planar TVF Series Planar UC Complete Planar Luxe	T10-F-C1G or T10-SL-C1G
VC4-L-F10G	Planar DirectLight Pro Series	T10-SL-C5G
VC8-L-C5G	Planar DirectLight Pro Series	N/A

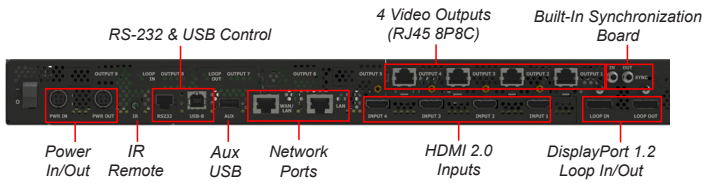
Planar WallDirector VC4-HSL



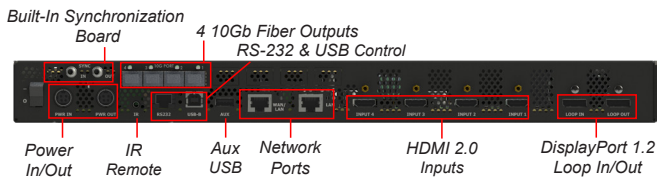
Planar WallDirector VC9H-BP+



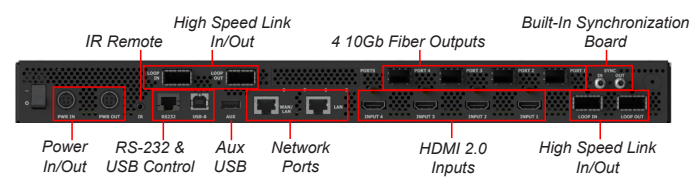
Planar WallDirector VC4H-BP+



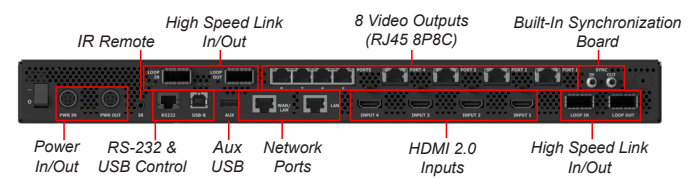
Planar WallDirector VC4-L



Planar WallDirector VC4-L-F10G



Planar WallDirector VC8-L-C5G



For more information visit: www.planar.com/walldirector-vc

Planar is a trademark of Planar Systems, Inc. All other trademarks and service marks are property of their holders. Copyright © 2023 Planar Systems, Inc. All rights reserved. This document may not be copied in any form without permission from Planar. Information in this document is subject to change without notice. 6/2023