

Clarity VCS Video Wall Processor Product Training Class

Dates: April 5, 2013 – afternoon

Location: Planar Systems Inc.
24, rue Evariste Galois
81 000 ALBI
FRANCE

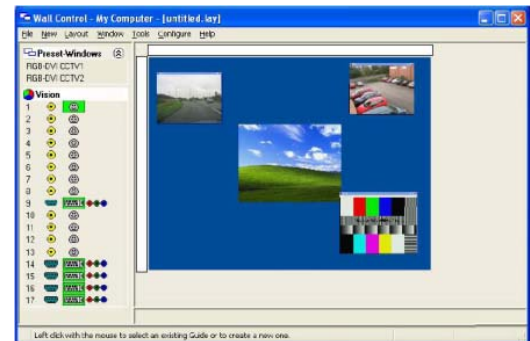


TRAINING SCHEDULE

The Essentials of Clarity VCS Processor and Control Software

1:30 pm - 5:00 pm

- Clarity™ VCS Video Wall Processor description
 - Product functionality
 - General system architecture
 - Supported inputs and display capabilities
 - VCS performance
- Details on VCS components
 - PCI Express backplane with switch fabric management
 - Input cards models
 - Output cards
 - SBC and other components
 - Optional VCS video over IP decoder
- Software information
 - Windows 7 base VCS Control
 - Sources display management
 - Windows layout save and recall
 - System monitoring
- VCS practicum
 - Sources and displays connection
 - System set up: inputs and outputs
 - VCS operation
 - Preset Layouts
 - Remote control from network computers



Registration:

Email training@planar.com to register

Travel Information:

Air Travel:

Albi is situated 85 kilometers from Toulouse Blagnac Airport.

Trip to/from Albi:

Attendees are eligible for Planar preferred rates with *Brigitte Héral* local taxi company: 100 € for the one hour trip from Toulouse Blagnac Airport to Albi (at least 50% less than normal taxi fare).

Planar can make arrangements for the taxi to pick you up at the airport (taxi driver will be expecting you at the arrival gate, exhibiting a Planar sign).

→ Email the **origin and arrival time of your flight** to training@planar.com

Hotel:

We recommend

Mercure Albi Bastides Hotel

41 bis, rue Porta
81000 ALBI

Planar's corporate rates:

- 85 € /night – Single room
- 94 € /night – Double room
- Breakfast: 8/14 € (down to 1 € for 5 nights stay or more!)

→ Contact for reservation
(request Planar's corporate rates):

Tel: (+33) 563 476 666

mercure.albi@wanadoo.fr



The Mercure Hotel is housed in an 18th century building, overlooking the Tarn River, typical of the charming Albi brickwork (the old city center has recently been added to the UNESCO World Heritage List). Renovated in 2008, the Mercure rooms offer modern comfort.

Transportation:

Planar organizes a shuttle in the mornings and evenings from the Mercure hotel and back.

Meals:

Lunch is provided as part of training.

Training Questions or to Register:

Please contact Training@planar.com